

SMARTER EDUCATION



SMARTER EDUCATION

Centre of Education Research and Development, Hong Kong Policy Research Institute
Partnered with Big Education Platform

Unit 1409-1413, 14/F, Manhattan Centre, 8 Kwai Cheong Road, Kwai Chung
T: (852) 2648 4303 F: (852) 3920 0688 E: hkpri@hkpri.org.hk



WHAT IS “SMARTER EDUCATION” ?

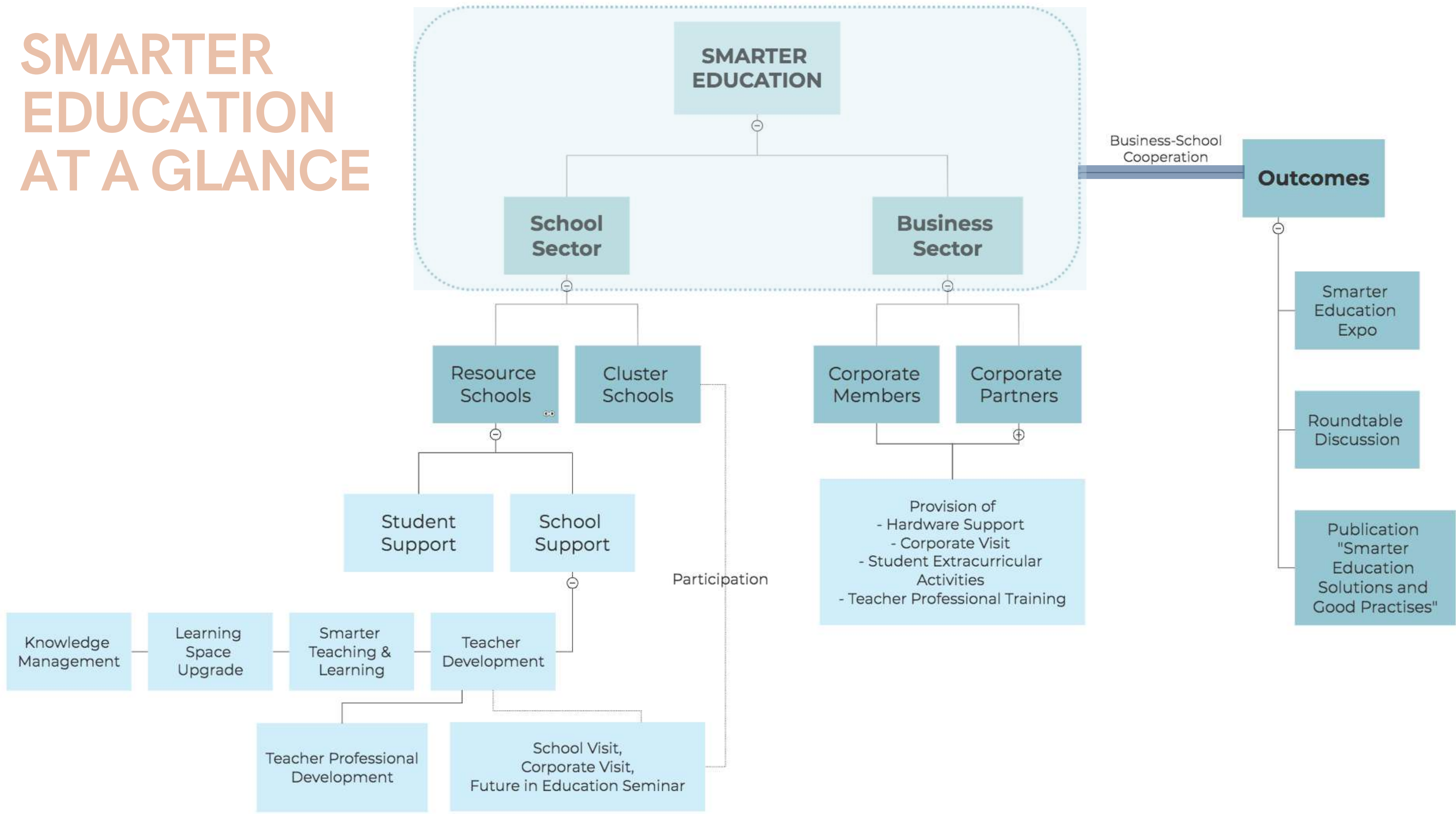
Since June 2019, Hong Kong has seen months of non-stop social unrest, which has led the Education Bureau to announce class suspensions on two separate occasions. Under class suspension, numerous schools have been exercising the goal of 'suspending classes without suspending learning' by implementing e-learning. Such situations are slowly promoting and shaping schools into 'Smarter Schools'.

The 'Smarter Education' Scheme invited notable and experienced personnel from the field of Education to form a research team. The team is formed in hopes of offering an extensive understanding of the smart schools' current development of smart schools in Hong Kong, concurrently, integrating social resources for the provision of a more comprehensive support scheme for schools, teachers and students.

The Co-creation of
Intelligent, Individualized,
Inter-connected Education
via Business-School Cooperation



SMARTER EDUCATION AT A GLANCE



SCHOOL SECTOR

HOW TO TAKE PART ?

We welcome participation from School Sector for Business-School Cooperation in Smarter Education. The cooperation is going to transform Hong Kong education sector to “Smarter Schools and learning” through developing a concerned cluster and 5-10 successful cases (resource schools) in 2 years.

For schools who are interested, participation can either be in the form of [Resource School](#) or [Cluster School](#).

SCHOOL SECTOR

RESOURCE SCHOOLS

5-10 primary and secondary schools

Pilot cases under school improvement support

- Putting “Smarter School” into the school plan in 2020/21 and 2021/22
- Participated in school improvement projects
- Allow our research team to required data
- Professional sharing or open classrooms
- Participate in the project survey

CLUSTER SCHOOLS

10-20 primary and secondary schools.

Interested school and teachers join our workshops and events

- Participate in the teachers’ professional development workshops at least twice a year
- Participate in the project survey
- Consider putting “Smarter School” into the school plan in 2022/23



BENEFITS SCHOOL SECTOR

- ✦ Receive smarter education newsletter.
- ✦ Prioritized registration for our teachers' professional development workshops, open classrooms, seminars and other events.
- ✦ Free or discount in hardware or software purchasing
- ✦ Customized school improvement supported by HKPRI and educators from Big Education Forum
- ✦ Advice from principal consultants
- ✦ School-based teacher professional development
- ✦ Collaborative lesson planning and lesson observation from external expert
- ✦ Upgrade schools' software management systems
- ✦ School-based report
- ✦ Applicable only to Resource School

TO CREATE SHARED VALUES

Corporate
Expertise
and Business
Opportunities

**Education
and Social
Needs**

Co-creation of Intelligent,
Individualized, Inter-connected
Education

CURRENT ACHIEVEMENTS

SCHOOL SUPPORT

Our research centre hosted two webinars regarding smart schools on 7th and 8th April 2020. 150 teachers were participated in each. Besides, we also organized 2020 Professional Development E-Festival successfully on 27th to 29th April 2020.

Altogether 12 webinars were hosted and over 2000 teachers participated in the webinars.

STUDENT SUPPORT

Since 2020, our research centre has been assisting various organizations in the integration of social resources, establishing an effective distribution system and scoring mechanism. In particular, we assist to purchase and deliver resources and service for Smart Education to local students in need.

Since 2020, our center has successfully distributed 1,700 laptops to more than 400 schools and underprivileged students.



SCHOOL SUPPORT

(RESOURCE SCHOOLS ONLY)

SCHOOL SUPPORT OBJECTIVES

- Cultivate students' self-directed learning ability
- Improve the efficiency and effectiveness of learning and teaching
- Respond to diversified students' needs and students' inquiries
- Cultivate Information Literacy
- Enhance school administration capacity
- Sustainable development and building professional community



TRANSFORMING ASPECTS

School Leadership

An experienced principal or expert will first be paired as a consultant for the pilot school. The consultants mainly provide suggestions to the principals on their online learning reform. Support will be provided to schools promptly and school's progress will be reported back to the school regularly.

School Management

Experienced principals or experts will assist the school in building a 'SMARTER SCHOOL' operation framework from the school's perspective. Technicians will provide technical support to schools and assist teachers and schools to transform daily school tasks into a comprehensive online learning system.

Curriculum Reform and School Observations

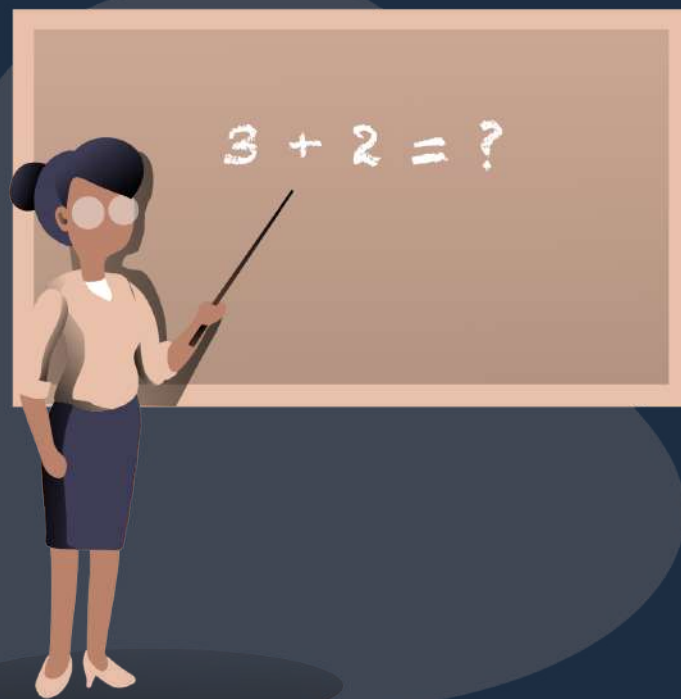
The project takes one of the subjects as the leading subject. After launching the course, principal consultants from the Big Education Platform will conduct school observations on the practice of online learning. After gathering information from observations and school meetings, suggestions for improvement will be given regarding the performances of schools and teachers.

Professional Participation

The Hong Kong Policy Research Institute will summarize the effectiveness of pilot schools and share the school-based experiences with academics, social organizations and other related professionals from the 'Smart Schools and Teachers Circle'.

Community Participation

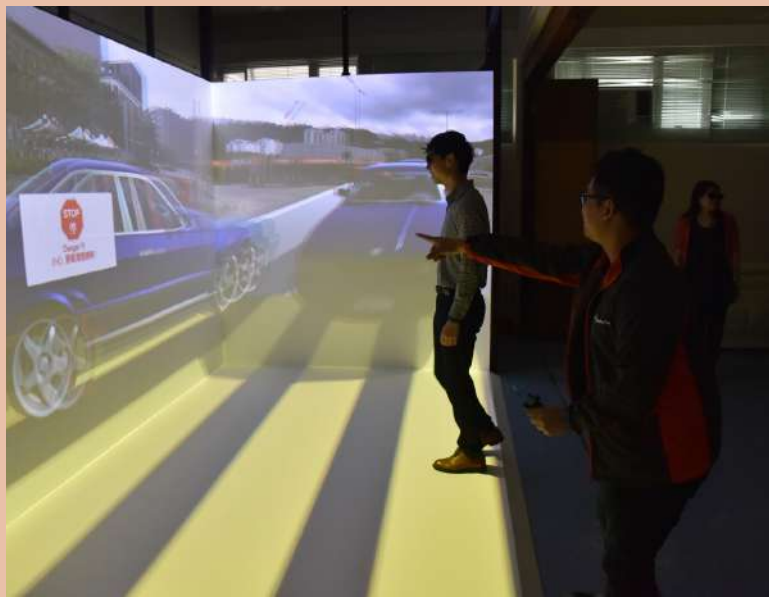
The effectiveness of the pilot school will also be shown to parents and students. It will share the effectiveness of smart schools in areas such as students' learning and personal development, home-school cooperation, etc.



ACTIONS

TEACHER DEVELOPMENT

- Teacher Professional Development
- School Visit
- Corporate Visit
- Future in Education Seminar



LEARNING SPACE UPGRADE



SMARTER TEACHING & LEARNING



KNOWLEDGE MANAGEMENT



STUDENT SUPPORT

(FOR RESOURCE SCHOOLS ONLY)

EXPERIENTIAL LEARNING EXPERIENCE

Cultivating their curiosity and strengthening their knowledge, numbers of outings and workshops were organized to build board experiential learning opportunities and experience for students. Some of the previous outings are listed below.

1. The Mills Summer Program 2017 & 2018

An initiative which provided students with the opportunity to explore their interests and build skills, giving them a real taste of business world.



2. STEAM @ Soybean

Visit State Soybean Laboratory and Farm in Gansu province to study soybean planting techniques.

3. NetDragon VR Student Workshop

The visit to the NetDragon headquarter in Fuzhou enable students to develop technological capability and critically appraise the impact of technology on the individual, family, society and environment.



BUSINESS SECTOR

HOW TO TAKE PART

We welcome participation from business sector for Business-School Cooperation in Smarter Education. For enterprises who are interested to participate, we appreciate the following forms of sponsorship including, but not limited to:

- **Hardware Support (e.g. Computers, Tablets)**
- **Software Support (e.g. Internet Service Plans)**
- **Extracurricular Activities (e.g. Support Tours, Outings)**
- **Teacher Professional Trainings**
- **Cash Sponsor**

BUSINESS SECTOR

According to the level of participation and resources, enterprises can either join as a Corporate members or Corporate partners. Enterprise can provide promotion information to, and obtain news and experience regarding online teaching with the Member Schools.

CORPORATE MEMBERS

Interested business members to share their vision

- Share your vision or your product in smart teaching
- Encourage to provide support or other resources to our school participants
- Encourage to provide joint school professional development workshops



CORPORATE PARTNERS

Support the resource school and develop new schooling model

- Share your vision or your product in smart teaching
- Provide support or other resources to our school participants
- Provide joint school professional development workshops

We have already received sponsorship and application from a number of enterprises as of press time. Please contact us for further cooperation opportunities, planning proposals and research statistics of Smarter Education.

BENEFITS

BUSINESS SECTOR

- ✧ Receive smarter education newsletter
- ✧ Share your vision, product and service to HK education sector
- ✧ Direct contact to stakeholders in HK education sector
- ✧ Prioritized registration for our teachers' professional development workshops, open classrooms, seminars and other events.
- ✧ Build the Smarter teaching, learning or schooling solution together, the corporate partner will be credited
- ✧ Those Smarter teaching, learning or schooling solution would be tested, backed by experiment and local education sector
- ✧ Applicable only to Corporate Partners

TO CREATE SHARED VALUES

**Corporate
Expertise
and Business
Opportunities**

Education
and Social
Needs

Co-creation of Intelligent,
Individualized, Inter-connected
Education

ACTIONS

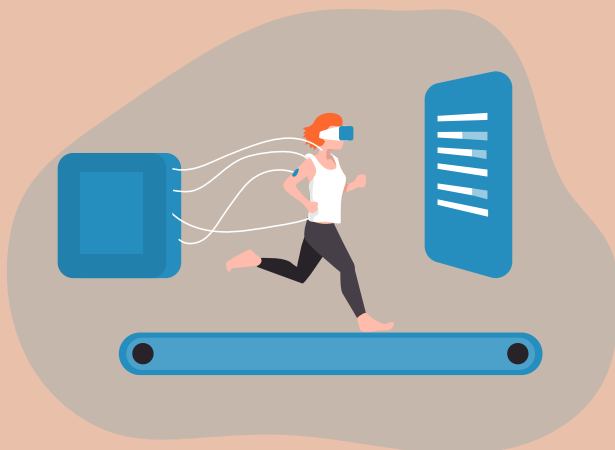
HARDWARE SUPPORT



CORPORATE VISITS




STUDENT EXTRACURRICULAR ACTIVITIES



TEACHER PROFESSIONAL TRAINING



The background of the entire slide is a photograph of a city skyline at sunset. The sky is a gradient of orange and yellow, and the city buildings are silhouetted against it. On the left side, there is a vertical white bar containing the text "SMARTER EDUCATION".

SMARTER EDUCATION

SUPPORT US

The Business-School Cooperation is going to transform Hong Kong education sector to "Smarter Schools and learning" through developing a concerned cluster and 5-10 successful cases (resource schools) in 2 years.

For enterprises who are interested in participating in SMARTER EDUCATION, please contact us for further cooperation opportunities, planning proposals and research statistics of Smarter Education.

OUTCOMES FROM BUSINESS-SCHOOL COOPERATION



SMARTER EDUCATION EXPO

A showcase of the experience acquired from resource schools to further enhance the recognition and acceptability of Smarter Education in Hong Kong.



ROUNDTABLE DISCUSSION

Discussion among both School and Business Sectors for clarifying future Smarter Education obstacles and solutions



"SMARTER EDUCATION SOLUTIONS AND GOOD PRACTICES" PUBLICATION

A summary of the Business-School Cooperation and Program Achievements.

Hong Kong Policy Research Institute

Hong Kong Policy Research Institute (HKPRI) is a nonprofit and independent public policy think tank set up in 1995, upon China's resumption of its execution of sovereignty over Hong Kong in 1997 and with the objective to contribute, through public policy research, to the success of Hong Kong People Governing Hong Kong. HKPRI was ranked for four consecutive years in 2015 - 2018 among the Top 100 think tanks in the regions of China, India, Japan and South Korea in the Global GoTo Think Tank Index Report: The Think Tanks and Civil Societies Program (TTCSP) of the Lauder Institute at the University of Pennsylvania. The mission is to conduct quality research and provide effective recommendations by polling together local, mainland and international minds, and to create social impact by collaborating with stakeholders to form policy communities

Centre for Education Research and Development, HKPRI

Set up with the support of a group of experienced educators and former education officials, it aims at contributing to the continuous professional development in local schools, mainly in three areas:

- 1) education policy research;
- 2) education consultancy services; and
- 3) training programs, particularly in the area of school leadership and management.

Big Education Platform

HKEducation Research Limited was incorporated in 2016 as a guarantee company with no share capital and is exempted from tax due to its public charity. As a non-governmental organization in educational research and policy advocacy, HKEducation Research Limited fully supports educational research conducted by the "Education 2.1 Group" composed of 17 educators, scholars and the business sector. At the end of 2016, the "Education 2.1 Group" published research, "Different Education", which provides four main recommendations, one of them is "building a big education platform, aim at social participation and optimizing learning.

ABOUT US

Committee of the SMARTER SCHOOL Research Team



Prin. Tai Hay-Lap
(Convener of Education
Research and Development
Centre, HKPRI)



Mr. Chan Ming-Ming
(Research Fellow of
Education Research and
Development Centre,
HKPRI)



Dr. Ray Chak-Chung
Cheung (Assistant
Professor of Electrical
Engineering, City
University of Hong Kong)



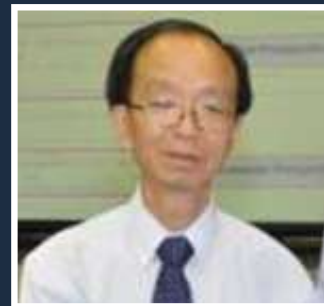
Prin. Choi Sung-Ki
(Research Fellow of
Education Research and
Development Centre,
HKPRI)



Mr. Fung Chi-Ching
(Researcher of Education
Research and Development
Centre, HKPRI)



Prin. James LAM Yat-Fung
(Former-chairman of Hong
Kong Subsidized Secondary
Schools Council)



Mr. Leung Kam-Chiu
(Research Fellow of
Education Research and
Development Centre,
HKPRI)



Dr. Liu Sze-Yeung, Elvis
(Assistant Professor of
Department of Computer
Science and Engineering,
Southern University of
Science and Technology)



Prin. TANG Chun-Keung
Teddy (Chairman of The
Hong Kong Association of
the Heads of Secondary
Schools)



Dr. TSE Ka Ho
(Associate Professor of
The Education University of
Hong Kong)



Prin. Yip Jo-Yin (Research
Fellow of Education
Research and Development
Centre, HKPRI)

SCAN ME



ADDRESS

Unit 1409-1413, 14/F, Manhattan Centre,
8 Kwai Cheong Road, Kwai Chung

PHONE NUMBER

(852) 3920 0688

FAX

(852) 2648 4303

EMAIL ADDRESS

hkpri@hkpri.org.hk

WEBSITE

www.hkpri.org.hk